

# 2603CTS – EVERYDAY TUB/SHOWERS

60 x 40 3/4 x 72 inches



## FEATURES

- Tub-shower
- Textured tile finish
- Ergonomic backrest
- Installed acrylic grab bar
- Molded toiletry shelves
- Slip-resistant textured bottom
- Left or right hand drain
- AcrylX™ applied acrylic surface
- Lifetime limited warranty

## OPTIONS

- Grab bar reinforcement
- Factory installed assisted care grab bars
- Designer drain, waste & overflow
- Shower Door Series L0516

## AQUATIC ADVANTAGE

- National distribution
- 6 manufacturing facilities
- Private fleet
- Centralized customer service
- Field support

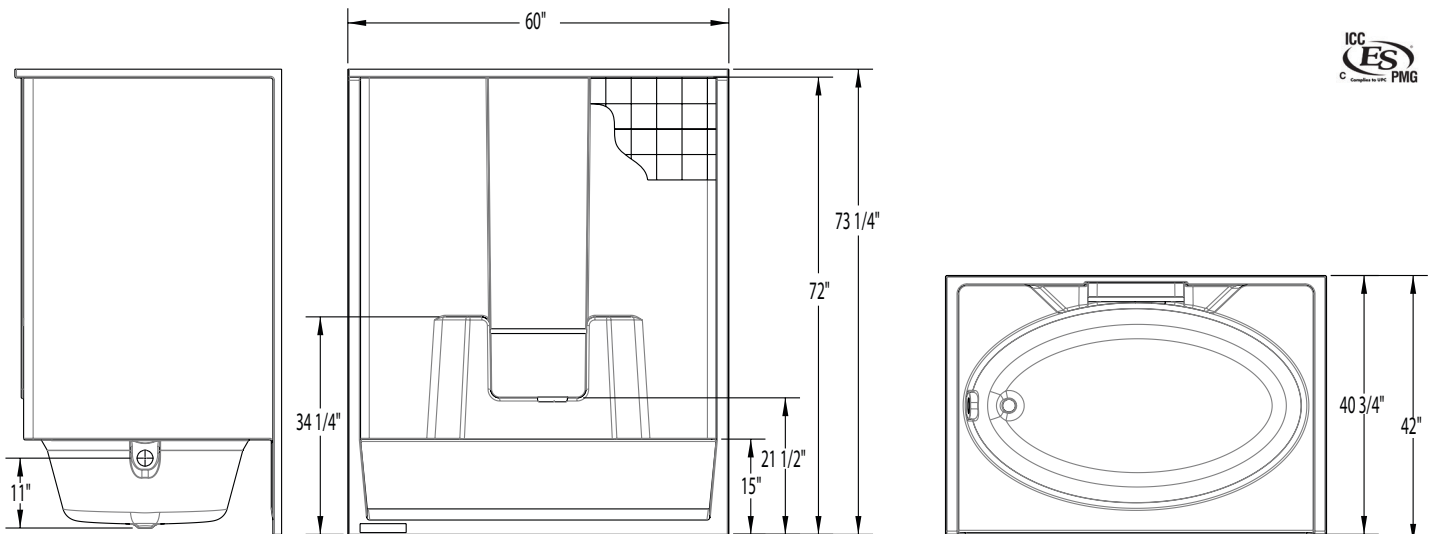
## COLOR OPTIONS

| Stock           | Upgraded              | Premium  |
|-----------------|-----------------------|--|
| Almond<br>White | Linen/Biscuit<br>Bone | Black<br>Mexican Sand<br>Sand Bar<br>Sterling Silver |



# 2603CTS

60 x 40 3/4 x 72  
inches



**FEATURES** lbs      Dimensional Tolerance  $\pm \frac{3}{8}$ ". Dimensions needed for site preparation should be measured from the unit. Aquatic assumes no responsibility for preparatory work.

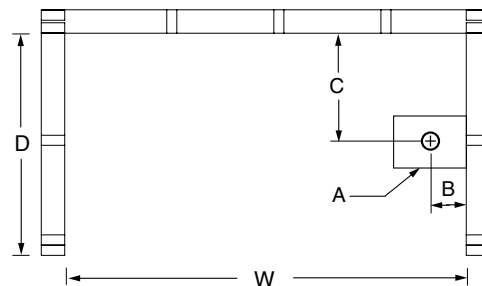
| Model #             | Material | Wall Finish   | Jets | Motor | Controls | Drain    | Net Wt. | Pkg. Wt. |
|---------------------|----------|---------------|------|-------|----------|----------|---------|----------|
| Tub-Shower #2603CTS | AcrylX™  | Textured Tile | –    | –     | –        | LH or RH | 145     | 150      |

## DIMENSIONS

| Specifications                  | inches      |
|---------------------------------|-------------|
| Width: Overall / Net            | 60          |
| Depth: Overall / Net            | 42 / 40 3/4 |
| Height: Overall / Net           | 73 1/4 / 72 |
| Enclosure Opening               | 55 3/4      |
| Skirt Height                    | 15          |
| Drain Rough-In (from Back Wall) | 20 1/2      |
| Drain Rough-In (from Side Wall) | 2 3/4       |
| Drain: Diameter / Clearance     | 2 / 1 1/4   |

## FRAMING DIMENSIONS inches

| Type   | D<br>Depth | W<br>Width | H<br>Height | A       | B     | C      |
|--------|------------|------------|-------------|---------|-------|--------|
| Alcove | 42         | 60 1/8     | –           | Box Out | 2 3/4 | 20 1/2 |



## SUMP DATA

| Top of Drain to<br>Bottom of Overflow | Capacity<br>to Overflow<br>gal | Min. Operating<br>Capacity<br>gal | WIDTH @ centerline |        | DEPTH @ centerline |        |
|---------------------------------------|--------------------------------|-----------------------------------|--------------------|--------|--------------------|--------|
|                                       |                                |                                   | Top                | Bottom | Top                | Bottom |
| 8 7/8                                 | 58                             | –                                 | 52                 | 46     | 30 1/2             | 24 1/2 |